

QUANTITY TAKE-OFF SHEET

Client: (Hidden for Privacy)
 Project Name: (Hidden for Privacy)
 Project ID: (Hidden for Privacy)
 Last Updated: 6/22/2020

Website: www.qtoestimating.com
 Email: info@qtoestimating.com
 Contact: (917) 675-3388

STRUCTURAL STEEL TAKEOFF

S#	DWG REF	DETAIL REF	CSI No	DESCRIPTION	QTY	UNIT	UNIT PRICE	TOTAL PRICE
1				General Requirements	1	LS		
				Subtotal				
				PAD G				
				Building steel framing				
2	S3.1			W36x135 = 60 LF	17000	LB		
	S3.1			W16x36 = 19 LF				
	S3.1			W8x10 = 9 LF				
	S3.1			HSS6x6x5/16 = 78 LF				
	S3.1	S1.1		HSS4x4x1/4 column (C2) = 45 LF				
	S2.1	S1.1		HSS5x5x5/16 column (C1) = 48 LF				
	S3.1	Keynote 319		L6x6x5/16 angle = 22 LF				
	S3.1			L8x6x7/16 = 60 LF				
	S3.1	S1.1		L3-1/2x3-1/2x1/4 steel perimeter angle (L1, L2) = 415 LF				
	S2.1	S1.1		1"x12"x12" steel plate = 3 EA Misc. steel 5% = 800 LB				
			Steel framing at roof opening/mechanical unit support					
3	S3.1	A1/S1.3		C8x11.5 = 162 LF	2450	LB		
	S3.1	A1/S1.3		8"x1/4" steel plate = 80 LF				
				Steel lintels				
4	S3.1	S1.1		W16x26 w/ 3/8" steel plate (SL3) = 34 LF	5900	LB		
	S3.1	S1.1		W16x31 w/ 3/8" steel plate (SL4) = 62 LF				
	S3.1	S1.1		W16x45 w/ 3/8" steel plate (SL5) = 28 LF				
	S3.1	Keynote 315		L4x4x3/8 steel lintel brace = 50 LF				
				Awning framing				
5	S3.1			C8x18.7 = 280 LF	9500	LB		
	S3.1			HSS8x4x5/16 = 99 LF				
	S3.1	A3/S5.1		12"x12"x1/2" Steel plate = 7 EA				
	S3.1	B1/S5.1		12"x12"x3/8" Steel plate = 6 EA				
	S3.1	A1/S5.1		4"x12"x3/8" Steel plate = 16 EA				
	S3.1	A1/S5.1		8"x8"x3/8" Steel plate = 12 EA				
	S3.1	A1/S5.1		3x3x3/16 steel angle = 130 LF				
	S3.1	A1/S5.1		4x3x1/4 steel angle = 125 LF Misc steel (4%)				
6	S3.1	Keynote 313	C6x3-1/2x12GA Cold formed steel purlins	450	LF			
7	S3.1	A1/S5.1	1" Tieback rod	12	EA			
				Steel bracing at parapet wall				
8	S3.1	A4/S5.2		HSS2x2x3/16 = 60 LF	2250	LB		
	S3.1	A4/S5.2		L6x6x1/2 = 80 LF				
	S3.1	A4/S5.2		L4x4x1/4 = 62 LF				
				Steel joists				
9	S3.1			26K	118	LF		
10	S3.1			16K	92	LF		
11	S3.1			30K	940	LF		
12	S3.1	Keynote 304		Steel joist bridging per SJI requirements by Joist manufacturer	228	LF		
				Metal deck				
13	S3.1	Keynote 301		1-1/2" 20GA Metal deck	7110	SF		
14	S3.1	Keynote 314		1-1/2" 22GA Metal deck	1250	SF		
				Grating				
15	S3.1	Keynote 320		1-1/2" Steel bar grating per GSN	390	SF		
				Cold formed Metal studs framing				

QUANTITY TAKE-OFF SHEET

Client: (Hidden for Privacy)
 Project Name: (Hidden for Privacy)
 Project ID: (Hidden for Privacy)
 Last Updated: 6/22/2020

Website: www.qtoestimating.com
 Email: info@qtoestimating.com
 Contact: (917) 675-3388

STRUCTURAL STEEL TAKEOFF

S#	DWG REF	DETAIL REF	CSI No	DESCRIPTION	QTY	UNIT	UNIT PRICE	TOTAL PRICE
16	A1.0	Wall type 1 & 2		1-5/8" Metal studs incl. tracks	1100	LF		
17	A1.0	Wall type 2 & 3		6" Metal studs incl. tracks - exterior	3750	LF		
18	A1.0	Wall type 5		6" Metal studs incl. tracks - interior	350	LF		
				Misc. metal				
19	S3.1	A2/S5.2		6"x18GA steel plate below shear wall	40	LF		
20	A5.0	Keynote 32		18'H Metal access ladder	1	EA		
21	A5.0	Keynote 33		1-1/2" dia. X 42"H guardrail	10	LF		
22	A5.0	Keynote 35		3" dia.x 5'10"H Mounting rail for cell equipment Note: Extent of rail is not shown on plans	1	LS		
23	A1.1	3/A8.0		19'H Roof access ladder	1	EA		
					Subtotal			
				PAD H				
				Building steel framing				
24	S2.1	S1.1		HSS4x4x5/16 column (C1) = 75 LF	3900	LB		
	S3.1	S1.1		L3-1/2x3-1/2x1/4 steel perimeter angle (L1, L2) = 421 LF				
	S2.1	S1.1		3/4"x11"x11" steel plate = 5 EA Misc. steel 5%				
				Steel framing at roof opening/mechanical unit support				
25	S3.1	A1/S1.3		C8x11.5 = 152 LF	2250	LB		
	S3.1	A1/S1.3		8"x1/4" steel plate = 70 LF				
				Steel lintels				
26	S3.1	S1.1		W16x31 w/ 3/8" steel plate (SL4) = 116 LF	5500	LB		
	S3.1	Keynote 315		L4x4x3/8 steel lintel brace = 70 LF				
				Awning framing				
27	S3.1			C8x13.7 = 315 LF	7950	LB		
	S3.1			HSS8x4x1/4 = 87 LF				
	S3.1	A3/S5.1		12"x12"x1/2" Steel plate = 6 EA				
	S3.1	B1/S5.1		12"x12"x3/8" Steel plate = 6 EA				
	S3.1	A1/S5.1		4"x12"x3/8" Steel plate = 17 EA				
	S3.1	A1/S5.1		8"x8"x3/8" Steel plate = 17 EA				
	S3.1	A1/S5.1		3x3x3/16 steel angle = 140 LF				
	S3.1	A1/S5.1		4x3x1/4 steel angle = 140 LF Misc steel (4%)				
28	S3.1	Keynote 313		C6x3-1/2x12GA Cold formed steel purlins	403	LF		
29	S3.1	A1/S5.1		1" Tieback rod	17	EA		
				Steel bracing at parapet wall				
30	S3.1	A4/S5.2		HSS2x2x3/16 = 84 LF	2695	LB		
	S3.1	A4/S5.2		L6x6x1/2 = 82 LF				
	S3.1	A4/S5.2		L4x4x1/4 = 110 LF				
				Steel joists				
31	S3.1			30K	1410	LF		
				Metal deck				
32	S3.1	Keynote 301		1-1/2" 20GA Metal deck	8745	SF		
33	S3.1	Keynote 314		1-1/2" 22GA Metal deck	1150	SF		
				Cold formed Metal studs framing				
34	A1.0	Wall type 1 & 4		1-5/8" Metal studs incl. tracks	1150	LF		
35	A1.0	Wall type 4 & 5		6" Metal studs incl. tracks - exterior	3200	LF		

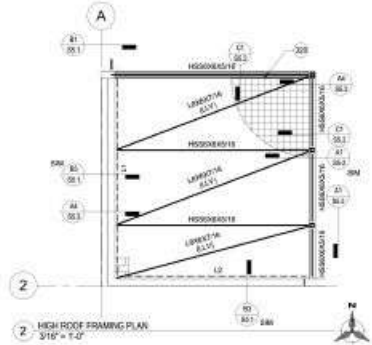
QUANTITY TAKE-OFF SHEET

Client: (Hidden for Privacy)
 Project Name: (Hidden for Privacy)
 Project ID: (Hidden for Privacy)
 Last Updated: 6/22/2020

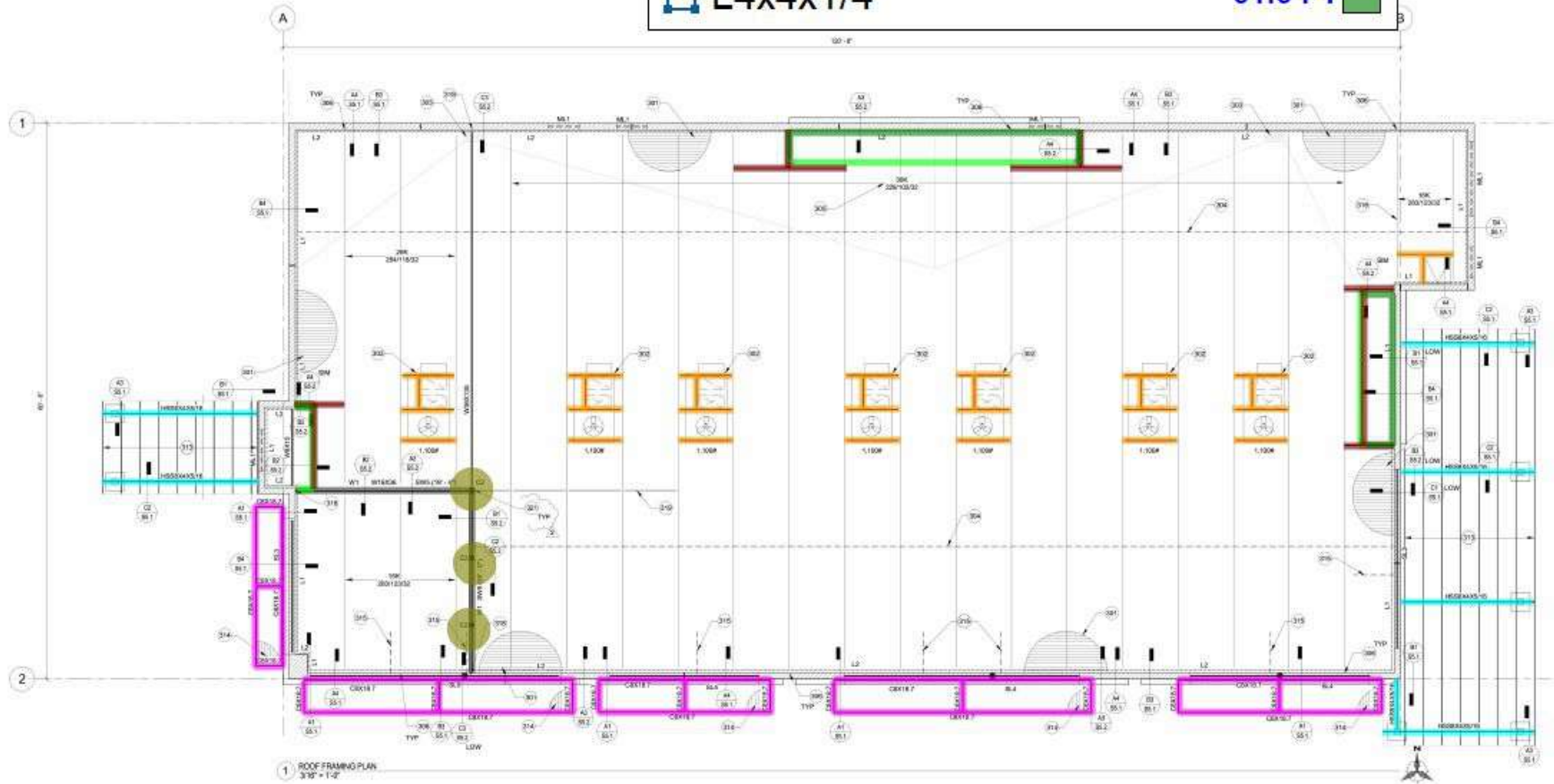
Website: www.qtoestimating.com
 Email: info@qtoestimating.com
 Contact: (917) 675-3388

STRUCTURAL STEEL TAKEOFF

S#	DWG REF	DETAIL REF	CSI No	DESCRIPTION	QTY	UNIT	UNIT PRICE	TOTAL PRICE
36	A1.0	Wall type 3		6" Metal studs incl. tracks - interior	580	LF		
				Misc. metal				
37	A1.1	3/A8.0		19'H Roof access ladder	1	EA		
				Subtotal				
				TOTAL				



KEYNOTES		ROOF FRAMING	
	C8x18.7	279.8 FT	
	HSS8x4x5/16	98.9 FT	
	C8x11.5	161.4 FT	
	C2 column	3.0	
	A4/S5.2 steel bracing	61.3 FT	
	L6x6x1/2	75.0 FT	
	L4x4x1/4	61.6 FT	









UNITED
STRUCTURAL DESIGN LLC
18255 N. 11TH ST. SUITE 111, GLENDALE, AZ 85305
PH: 602.955.8000 FAX: 602.955.8001
www.unitedsd.com
USD Project No. 20032



SHOPS 'G'
GLENDALE AVENUE RETAIL
NWC OF 91ST AVENUE AND GLENDALE AVENUE
GLENDALE, ARIZONA
2nd CITY SUBMITTAL (05.15.2020)

design by: GD
drawn by: EC
checked by: GD
S3.1
project #: 18255-08

	C8x13.7	313.6 FT	
	HSS8x4x1/4	86.1 FT	
	C6 Purlins	402.1 FT	
	C8x11.5	152.5 FT	
	30k joists	1,408.2 FT	
	L6x6x1/2	81.4 FT	

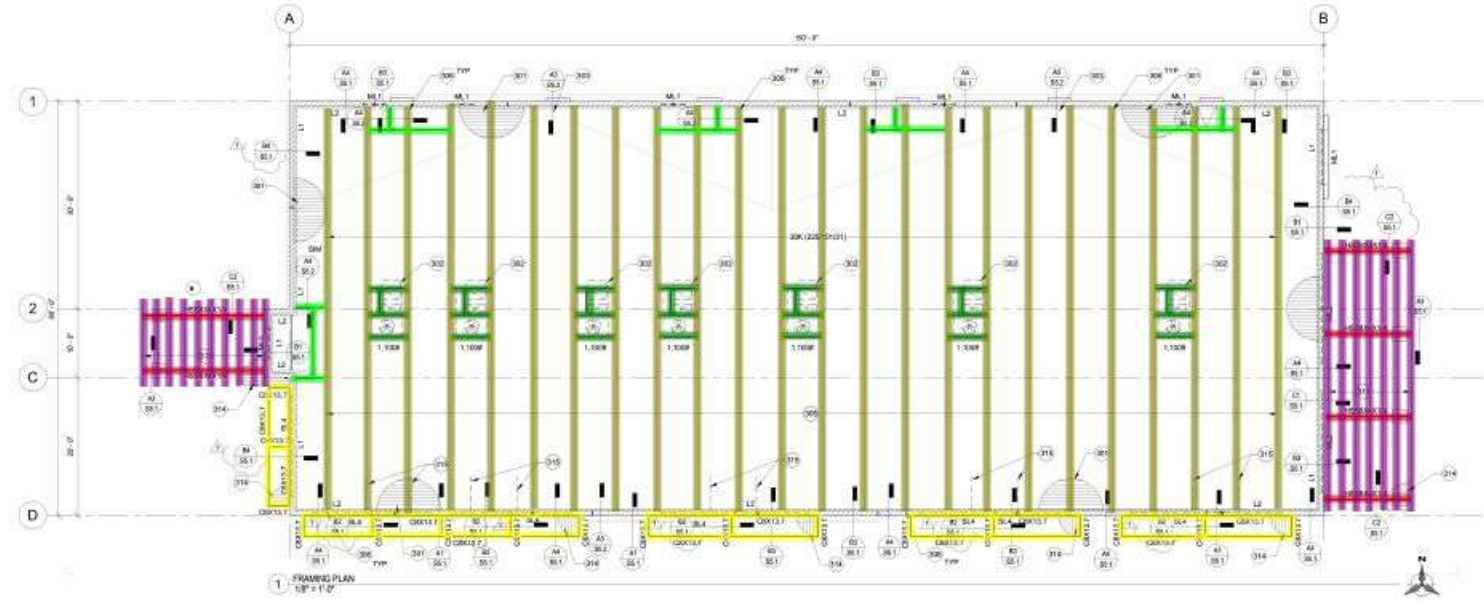
KEYNOTES

- 301 1 1/2"X3/8" GA. STEEL DECK. ATTACH PER GEN.
- 302 APPROPRIATE LOCATION OF MECHANICAL UNIT FOR FRAMING AT MECHANICAL UNITS AND AROUND OPENINGS REFER TO TYPICAL DETAILS, REFER TO ARCHITECTURAL AND MECHANICAL DRAWINGS FOR EXACT SIZE AND LOCATION.
- 303 APPROPRIATE LOCATION OF ROOF CHIMNEY FOR FRAMING AROUND ROOF CHIMNEY REFER TO TYPICAL DETAIL. REFER TO ARCHITECTURAL DRAWINGS FOR EXACT SIZE AND LOCATION.
- 304 ALL CONNECTIONS ARE DESIGNED FOR AN AXIAL TENSION OR COMPRESSION FORCE EQUAL TO 3 KIPS DUE TO UNFACTORED SEISMIC FORCE. THIS AXIAL LOAD SHALL BE TRANSFERRED THROUGH THE JOINT BEAT. JOINT IMPACT PAPER SHALL COMBINE THIS AXIAL LOAD WITH GRAVITY LOADS IN ACCORDANCE WITH THE APPROPRIATE CODES AND COMBINATIONS OF THE BUILDING CODE.
- 305 STEEL BEARING PLATE IMPACT WITH 3/4"X 5/8" DIA. HEDGED STUDS TYPICAL AT JOINT BEARING.
- 310 1 1/2"X3/8" GA. STEEL DECK. ATTACH PER GEN.
- 311 1 1/2"X3/8" GA. STEEL DECK. ATTACH PER GEN.
- 312 STEEL UNITS, BRACE. REFER TO DETAILS AUSA1 FOR ADDITIONAL INFORMATION.

ROOF FRAMING NOTES

- 1. VERIFY ALL DIMENSIONS PRIOR TO CONSTRUCTION. DIMENSIONS, ELEVATIONS WHERE SHOWN ARE TO BE USED AS AN AID AND SHALL BE COORDINATED WITH THE ARCHITECT OR GENERAL CONTRACTOR PRIOR TO CONSTRUCTION.
- 2. FOR ADDITIONAL INFORMATION, REFER TO MECHANICAL, STRUCTURAL, AND ELECTRICAL DRAWINGS.
- 3. ANY REFERENCE TO ELEVATIONS ARE BASED ON A PROJECT DATUM OF 10' AT FINISH FLOOR OF 1ST FLOOR. FOR MORE INFORMATION SEE ARCHITECTURAL DRAWINGS.
- 4. ALL DIMENSIONS ON PLAN INDICATE MEASUREMENTS UNLESS OTHERWISE NOTED.
- 5. ALL DIMENSIONS ON PLAN INDICATE MEASUREMENTS UNLESS OTHERWISE NOTED. SEE SCHEDULE ON SHEET 01-1.
- 6. ALL DIMENSIONS ON PLAN INDICATE MEASUREMENTS UNLESS OTHERWISE NOTED. SEE SCHEDULE ON SHEET 01-1.
- 7. FOR MECHANICAL UNITS, MECHANICAL UNITS NOT SHOWN, SEE TYPICAL DETAILS. MECHANICAL CONTRACTOR TO COORDINATE WITH OTHER TRADES FOR EXACT SIZE AND LOCATION REQUIRED.
- 8. ALL DIMENSIONS ON PLAN INDICATE MEASUREMENTS UNLESS OTHERWISE NOTED. SEE SCHEDULE ON SHEET 01-1.
- 9. FOR CLARITY, DETAILS MAY ONLY SHOW ONE SIDE OF CONNECTION.

UNITED
STRUCTURAL DESIGN LLC
 2000 N. CENTRAL AVENUE, SUITE 111, DENVER, CO 80202
 (303) 733-1100 FAX (303) 733-1101
 USD Project No. 20023



ROOF FRAMING PLAN

1. 05.18.20 (15) 05.18.20

PROJ. NO. 20023

DATE: 05.18.20

DESIGNER: G.D.

DRAWN BY: D.C.

CHECKED BY: G.D.

SHOPS 'H'
GLENDALE AVENUE RETAIL
 NWC OF 91ST AVENUE AND GLENDALE AVENUE
 GLENDALE, ARIZONA
 2nd CITY SUBMITTAL (05.18.20)

design by: G.D.
 drawn by: D.C.
 checked by: G.D.

S3.1
 project #: 18255-00

