

# QUANTITY TAKE-OFF SHEET

Client: (Hidden for Privacy)  
 Project Name: (Hidden for Privacy)  
 Project ID: (Hidden for Privacy)  
 Last Updated: 4/21/2020

Website: [www.qtoestimating.com](http://www.qtoestimating.com)  
 Email: [info@qtoestimating.com](mailto:info@qtoestimating.com)  
 Contact: (917) 675-3388

**MASONRY TAKEOFF**

| S# | DWG REF  | DETAIL REF | CSI No | DESCRIPTION  | QTY  | UNIT | UNIT PRICE | TOTAL PRICE |
|----|----------|------------|--------|--|------|------|------------|-------------|
| 1  |          |            |        | General Requirements   | 1    | LS   |            |             |
|    |          |            |        | <b>Subtotal</b>  |      |      |            |             |
|    |          |            |        | <b>MAUSOLEUM DEVELOPMENT</b>   |      |      |            |             |
|    |          |            |        | <b>Building type A (1 Building)</b>  |      |      |            |             |
| 2  | AA200    | A600       |        | Masonry veneer on façade incl. piers w/ all corners (460 LF)<br>- Metal ties @ 16" o.c.  | 2120 | SF   |            |             |
| 3  | AA200    | 3,7/A600   |        | Thru-wall membrane flashing  | 260  | LF   |            |             |
| 4  | AA200    | 3,7/A600   |        | Weeps @ 48" o.c.   | 60   | EA   |            |             |
| 5  | AA200    | 7/A600     |        | Galv. Steel angle painted to match stone above   | 70   | LF   |            |             |
| 6  | AA200    | 1,6/A600   |        | 3/4" thk polished granite Crypt fronts and trim  | 2710 | SF   |            |             |
| 7  | AA200    | 6/A601     |        | 4-5/8"x3-1/2" Granite sill   | 65   | LF   |            |             |
| 8  | AA200    | 4/A601     |        | 7-5/8"x3" thk Granite base   | 136  | LF   |            |             |
| 9  | AA200    | 9/A600     |        | 4-1/2"x10" Granite fascia w/ SS straps and anchors by stone supplier                     | 290  | LF   |            |             |
| 10 | AA200    | 2/A601     |        | Steel angle at fascia  | 290  | LF   |            |             |
| 11 | AA200    | A601       |        | 2'4"x2'4" Limestone pier cap   | 6    | EA   |            |             |
|    |          |            |        | <b>Building type B (3 Buildings)</b>   |      |      |            |             |
| 12 | AB200    | A600       |        | Masonry veneer on façade incl. piers w/ all corners (1380 LF)<br>- Metal ties @ 16" o.c. | 5010 | SF   |            |             |
| 13 | AB200    | 3,7/A600   |        | Thru-wall membrane flashing  | 690  | LF   |            |             |
| 14 | AB200    | 3,7/A600   |        | Weeps @ 48" o.c.   | 175  | EA   |            |             |
| 15 | AB200    | 7/A600     |        | Galv. Steel angle painted to match stone above   | 240  | LF   |            |             |
| 16 | AB200    | 1,6/A600   |        | 3/4" thk polished granite Crypt fronts and trim  | 9760 | SF   |            |             |
| 17 | AB200    | 6/A601     |        | 4-5/8"x3-1/2" Granite sill   | 240  | LF   |            |             |
| 18 | AB200    | 4/A601     |        | 7-5/8"x3" thk Granite base   | 496  | LF   |            |             |
| 19 | AB200    | 9/A600     |        | 4-1/2"x10" Granite fascia w/ SS straps and anchors by stone supplier                     | 840  | LF   |            |             |
| 20 | AB200    | 2/A601     |        | Steel angle at fascia  | 840  | LF   |            |             |
| 21 | AB200    | A601       |        | 2'4"x2'4" Limestone pier cap   | 18   | EA   |            |             |
|    |          |            |        | <b>Building type C (2 Buildings)</b>   |      |      |            |             |
| 22 | AC200    | A600       |        | Masonry veneer on façade w/ all corners (124 LF)<br>- Metal ties @ 16" o.c.              | 760  | SF   |            |             |
| 23 | AC200    | 3,7/A600   |        | Thru-wall membrane flashing  | 140  | LF   |            |             |
| 24 | AC200    | 3,7/A600   |        | Weeps @ 48" o.c.   | 35   | EA   |            |             |
| 25 | AC200    | 7/A600     |        | Galv. Steel angle painted to match stone above   | 52   | LF   |            |             |
| 26 | AC200    | 1,6/A600   |        | 3/4" thk polished granite Crypt fronts and trim  | 2980 | SF   |            |             |
| 27 | AC200    | 6/A601     |        | 4-5/8"x3-1/2" Granite sill   | 52   | LF   |            |             |
| 28 | AC200    | 4/A601     |        | 7-5/8"x3" thk Granite base   | 164  | LF   |            |             |
| 29 | AC200    | 9/A600     |        | 4-1/2"x10" Granite fascia w/ SS straps and anchors by stone supplier                     | 250  | LF   |            |             |
| 30 | AC200    | 2/A601     |        | Steel angle at fascia  | 250  | LF   |            |             |
|    |          |            |        | <b>Subtotal</b>  |      |      |            |             |
|    |          |            |        | <b>ADMINISTRATION BUILDING</b>   |      |      |            |             |
| 31 | A200,201 | A500       |        | 4" Nominal stone veneer (Random Ashlar) w/ corners (125 LF)                              | 2098 | SF   |            |             |
| 32 | A200,201 | A500       |        | Thin set masonry veneer  | 115  | SF   |            |             |
| 33 | A200,201 | A500       |        | (5-5/8"x4-3/4") Cut limestone sill   | 68   | LF   |            |             |
| 34 | A200,201 | A500       |        | Thru-wall flashing   | 390  | LF   |            |             |
| 35 | A200,201 | A500       |        | Galv. Steel angle  | 75   | LF   |            |             |
|    |          |            |        | <b>Subtotal</b>  |      |      |            |             |
|    |          |            |        | <b>CHAPEL BUILDING</b>   |      |      |            |             |
| 36 | A200,201 |            |        | Masonry veneer w/ corners (360 LF)<br>- Metal ties @ 16" o.c.                            | 9900 | SF   |            |             |

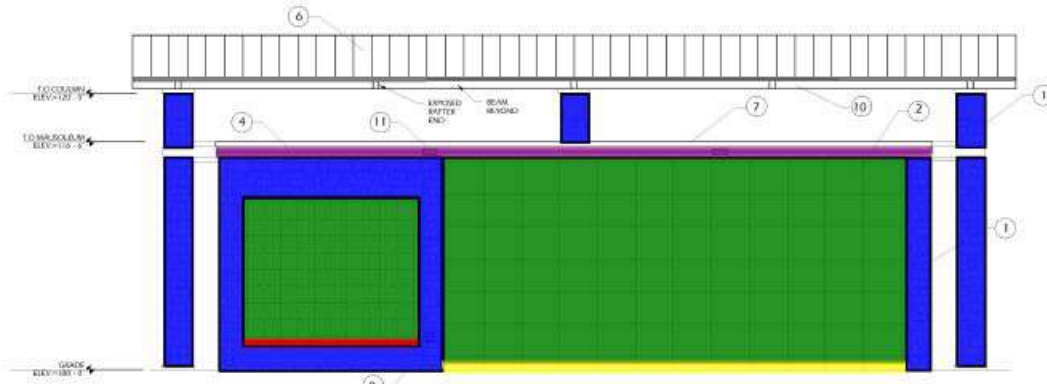
# QUANTITY TAKE-OFF SHEET

**Client:** (Hidden for Privacy)  
**Project Name:** (Hidden for Privacy)  
**Project ID:** (Hidden for Privacy)  
**Last Updated:** 4/21/2020

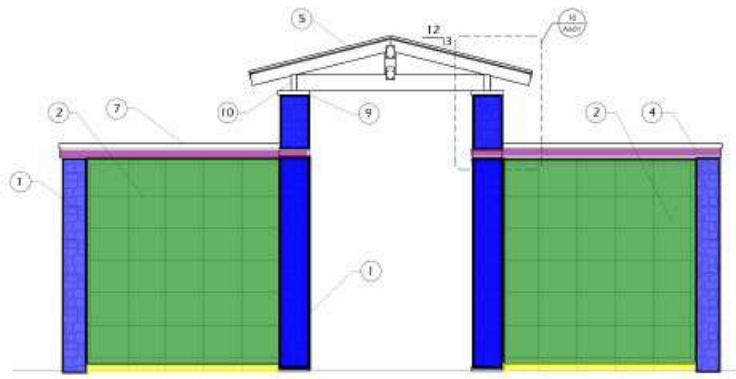
**Website:** [www.qtoestimating.com](http://www.qtoestimating.com)  
**Email:** [info@qtoestimating.com](mailto:info@qtoestimating.com)  
**Contact:** (917) 675-3388

## MASONRY TAKEOFF

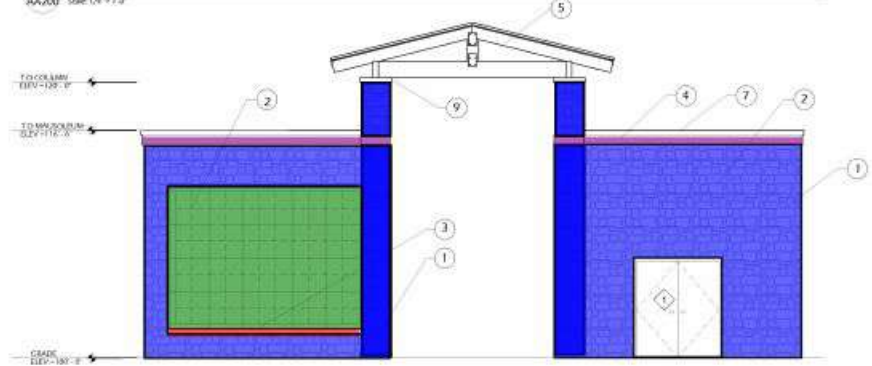
| S# | DWG REF  | DETAIL REF | CSI No | DESCRIPTION   | QTY   | UNIT | UNIT PRICE | TOTAL PRICE |
|----|----------|------------|--------|---|-------|------|------------|-------------|
| 37 | A200,201 |            |        | 2" Rigid insulation and air barrier                   | 10500 | SF   |            |             |
| 38 | A200,201 | 4/A601     |        | (3'x4'-3/8") Carved limestone piece                   | 8     | EA   |            |             |
| 39 | A200,201 | 4/A601     |        | (16'8"x1'8"-5/8") Limestone piece                     | 8     | EA   |            |             |
| 40 | A200,201 | 4/A601     |        | (1'6-1/4"x4'6") Carved limestone piece                | 10    | EA   |            |             |
| 41 | A200,201 | 3/A601     |        | Carved Limestone surround at window type A,B,F and I  | 590   | LF   |            |             |
| 42 | A200,201 |            |        | Limestone panels                                      | 280   | SF   |            |             |
| 43 | A200,201 |            |        | Carved Limestone surround at panels and window type E | 190   | LF   |            |             |
| 44 | A200     |            |        | Carved Limestone surround at Main entry door          | 22    | LF   |            |             |
| 45 | A200,201 | 2/A412     |        | 6" Limestone band                                     | 28    | LF   |            |             |
| 46 | A200,201 | A500-505   |        | Thru-wall flashing w/ SS drip edge                    | 1250  | LF   |            |             |
| 47 | A200,201 | A500-505   |        | Mortar net  | 900   | LF   |            |             |
| 48 | A200,201 | 5/A502     |        | Prefinished metal flashing                            | 223   | LF   |            |             |
|    |          |            |        | <b>Subtotal</b>                                       |       |      |            |             |
|    |          |            |        | <b>TOTAL</b>  |       |      |            |             |



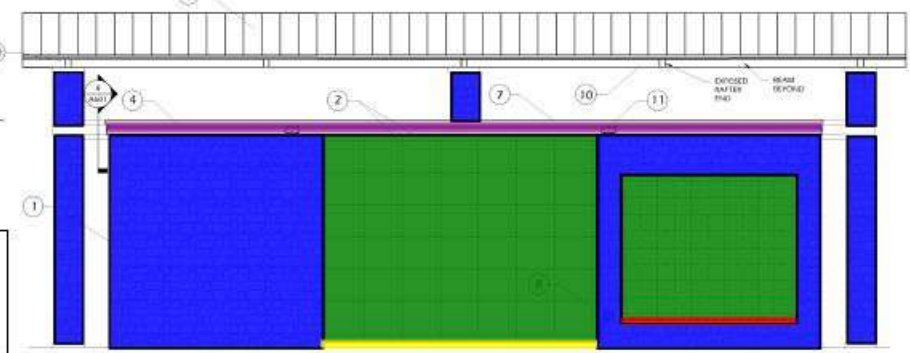
**4 ELEVATION**  
AA200 Scale: 1/4" = 1'-0"



**3 ELEVATION**  
AA200 Scale: 1/4" = 1'-0"



**2 ELEVATION**  
AA200 Scale: 1/4" = 1'-0"



**1 ELEVATION**  
AA200 Scale: 1/4" = 1'-0"

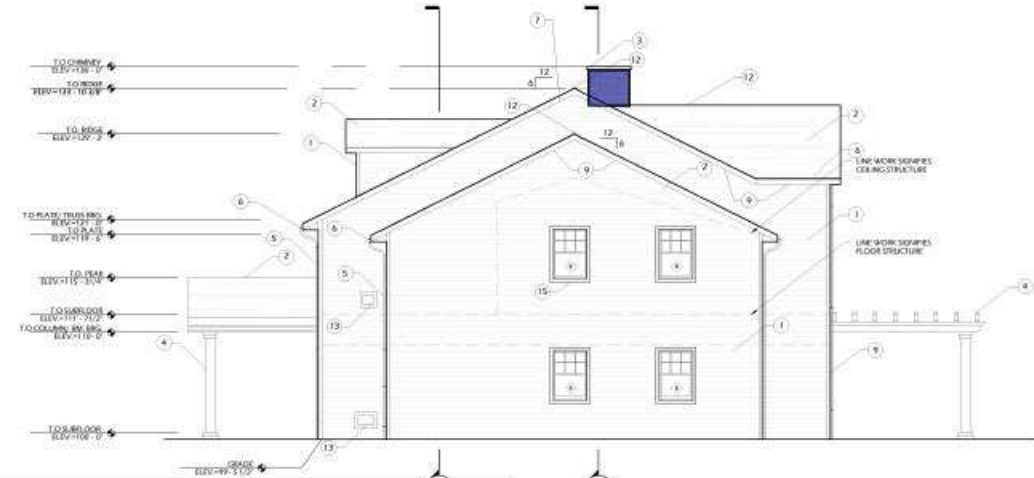
| MATERIAL NOTES |   |
|----------------|---|
| 1              | MASONRY VENEER TO MATCH CHURCH BUILDING   |
| 2              | 3/4" THICK POLISHED GRANITE LEWIS FRONTS AND TRANSOMS WHITE FINISH (AND MATCH BLACK TRIM)   |
| 3              | GRANITE SILL - (GROOK SCILL)  |
| 4              | LIMESTONE FASCIA W/ 1/8" SPACES BY STONE SURFER   |
| 5              | FASCIAED ARCHITECTURAL GRADE WOOD TRUSSES, SADD TO BE HEAVY TIMBER CONSTRUCTION, SMOOTH SAWN AND COUP WITH CORROSION RESISTANT FLATS AND PATENTED STRUCTURAL LEANED SEAL PLANT TO BE PILED AND PAINTED WITH EXTERIOR CORROSION RESISTANT AND COLOR PAINT MAINTENANCE EXTERIOR PAINT SYSTEM COLOR TO BE SELECTED BY ARCHITECT. TRUSS SEAM TO BE SELECTED BY ARCHITECT. |
| 6              | STAINLESS STEEL METAL ROOF COLOR TO BE AS SELECTED  |
| 7              | REFINISHED ALLIUM/WH COPING ON ZX   |

|  |   |                      |
|--|---|----------------------|
|  | <b>3/4" Polished Granite crypt fronts</b> | <b>2,696.4 SQ FT</b> |
|  | <b>Masonry veneer</b>                     | <b>2,111.7 SQ FT</b> |
|  | <b>sill</b>                               | <b>64.8 FT</b>       |
|  | <b>granite base</b>                       | <b>135.2 FT</b>      |
|  | <b>limestone fascia</b>                   | <b>279.5 FT</b>      |



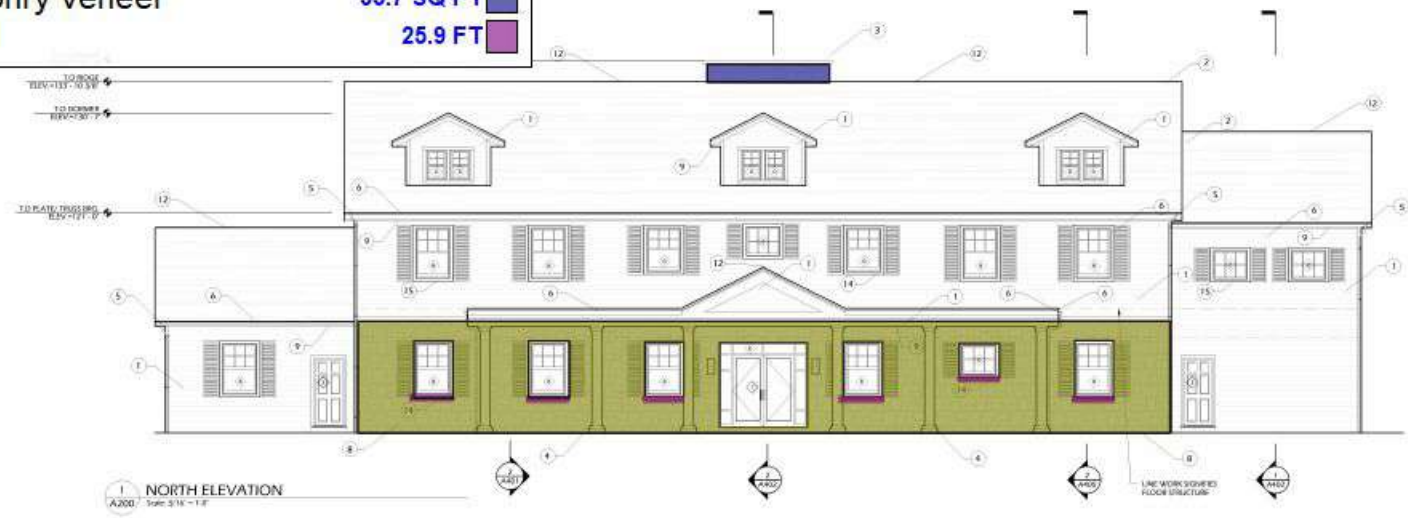
Tribute Design Systems, LLC  
 Architects and Planners  
 303 Colmanwood Ave.  
 Hartland, Wisconsin 53029  
 P: 262-367-9991  
 F: 262-367-9992  
 www.tribute.com

Consultants



| KEY NOTES | EXTERIOR MATERIALS SCHEDULE                                      |
|-----------|--|
| 1         | RED CEMENT CLAYED SIDING   |
| 2         | ARCHITECTURAL GRADE ASPHALT SHINGLE                              |
| 3         | THIN SET MASONRY VENEER TO 4" NOMINAL MASONRY VENEER             |
| 4         | HEAVY TIMBER COLUMN W/ DECORATIVE WOODS COLUMN COVER AND PERGOLA |
| 5         | PRE FINISHED METAL CORNER CUTS                                   |
| 6         | ROUND STYLE GUTTERS (PRE FINISHED)                               |
| 7         | LOW PITCHED GABLE VENT   |
| 8         | 4" NOMINAL MASONRY VENEER (RANDOM PATTERN)                       |
| 9         | VENTED FIBER CEMENT SOFFIT PANEL                                 |
| 10        | CONTRASTING PRE FINISHED METAL ROOF EDGE                         |
| 11        | PRE FINISHED METAL FLASHING                                      |
| 12        | GABLE VENT   |

|                           |             |
|---------------------------|-------------|
| 4" Nominal masonry veneer | 683.3 SQ FT |
| Thin set masonry veneer   | 35.7 SQ FT  |
| limestone sill            | 25.9 SQ FT  |



1 NORTH ELEVATION  
 A200 Scale: 3/16" = 1'-0"

For The  
**Queen of Peace Cemetery  
 Administration**  
 31 Hitchcock Lane  
 Old Westbury, NY, 11568  
**BID SET**

Sheet Title:  
**EXTERIOR  
 ELEVATION**

Revisions: \_\_\_\_\_ Date: \_\_\_\_\_

This drawing, its design concepts and all details are the sole property of Tribute Design Systems, LLC and shall not be copied in any form or manner without our prior authorization. © 2020.

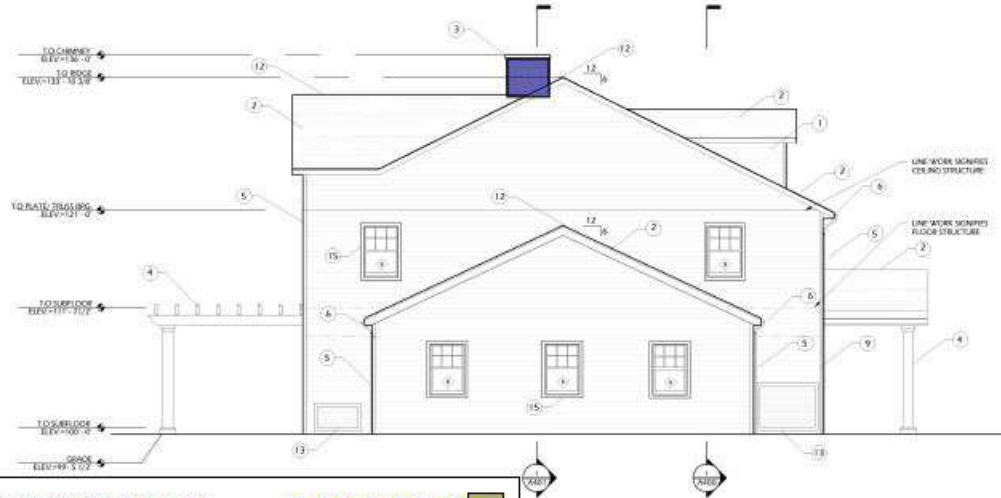
Scale: AS NOTED

Drawn by:  
 TDS  
 Project No.:

Date: 03-02-2020  
 Sheet No.:

**A200**





| KEY NOTES | EXTERIOR MATERIALS SCHEDULE                                     |
|-----------|---|
| 1         | FINISHMENT CLAYED BRICK   |
| 2         | ARCHITECTURAL GRADE ASPHALT SHINGLE                             |
| 3         | THIN SET MASONRY VENEER TO 4" NOMINAL MASONRY VENEER            |
| 4         | HEAVY TIMBER COLUMN @ DECORATIVE WOOD COLUMN COVER AND PERSICLA |
| 5         | PRE-FINISHED METAL (SODIUMFLAT)                                 |
| 6         | ROUND STEEL OUTLETS, PRE-FINISHED                               |
| 7         | COLOURED GABLE VENT   |
| 8         | 4" NOMINAL MASONRY VENEER (RANDOM AGES)                         |
| 9         | VENTED FIRE EXHAUST SCOFF PANEL                                 |
| 10        | CONTRASTING PRE-FINISHED METAL ROOF EDGE                        |
| 11        | PRE-FINISHED METAL FLASHING                                     |
| 12        | GABLE VENT  |
| 13        | DECK ASH FINISH   |

4" Nominal masonry veneer **1,414.6 SQ FT**  
 Thin set masonry veneer **78.0 SQ FT**  
 limestone sill **42.0 FT**



1 SOUTH ELEVATION  
Scale: 3/16" = 1'-0"

Project: Queen of Peace Cemetery Administration  
Project Location: 31 Hitchcock Lane, Old Westbury, NY, 11568  
**BID SET**

Sheet Title: EXTERIOR ELEVATION

Revisions: \_\_\_\_\_ Date: \_\_\_\_\_

This drawing is design concept and is not to be used for construction. It is the property of Tribute Design Systems, LLC and shall not be copied in any form or manner without written authorization. © 2014

Scale: AS NOTED

Drawn by: TDS  
Project No:

Date: 03-02-2020

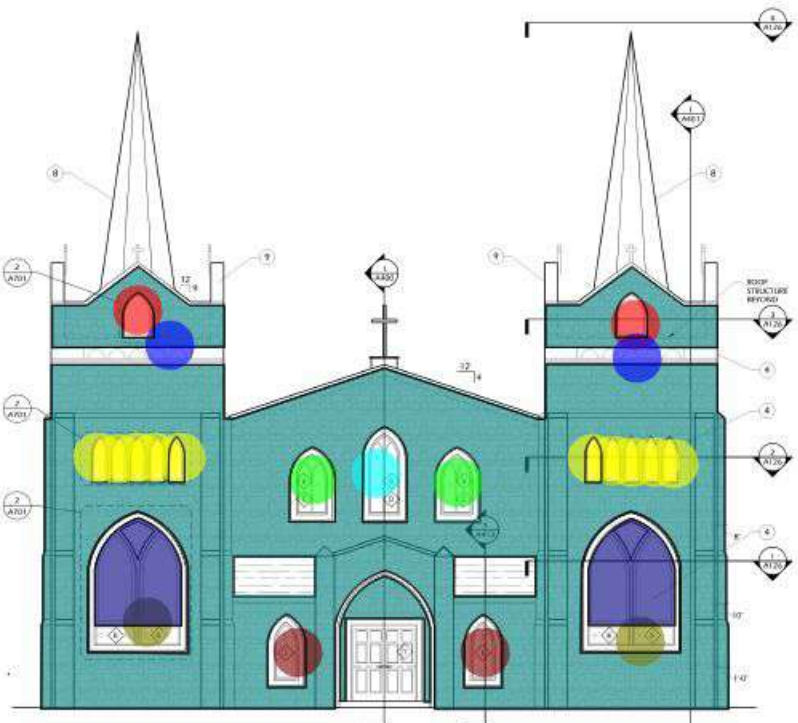
Sheet No:

**A201**

| KEY NOTES | EXTERIOR MATERIALS SCHEDULE  |
|-----------|--|
| 1         | IMBLAGATED SLATE ROOF SHINGLES                                       |
| 2         | LIMESTONE VENEER (MATERIAL FINISH SMOOTH) STANDARD COLOR (LIME CLAY) |
| 3         | MASSIVE LIMESTONE (SPECIAL FINISH LIME CLAY)                         |
| 4         | LIMESTONE PANELS SEE SCHEDULE FOR SYSTEMS                            |
| 5         | VENEER PREFINISHED METAL SLOTTED W/ INVERT SCRIBES                   |

- masonry veneer
- limestone piece
- window A surround
- limestone piece
- limestone piece
- Limestone
- window B surround
- Window I surround
- Window E surround
- limestone panels at window E

|               |  |
|---------------|--|
| 4,029.0 SQ FT | <span style="color: teal;">■</span>    |
| 3.0           | <span style="color: red;">●</span>     |
| 15.0          | <span style="color: green;">●</span>   |
| 10.0          | <span style="color: yellow;">●</span>  |
| 3.0           | <span style="color: blue;">●</span>    |
| 1.0           | <span style="color: magenta;">●</span> |
| 1.0           | <span style="color: cyan;">●</span>    |
| 2.0           | <span style="color: brown;">●</span>   |
| 2.0           | <span style="color: olive;">●</span>   |
| 147.3 SQ FT   | <span style="color: purple;">■</span>  |



2 SOUTH BUILDING ELEVATION  
Scale: 3/16" = 1'



1 EAST BUILDING ELEVATION  
Scale: 3/16" = 1'



Tribute Design Systems, LLC  
Architects and Planners  
302 Centerwood Ave.  
Northvale, NJ 07647  
P: 201-262-7999  
F: 201-262-7992  
www.tribute.com

Consultants

Project: The Queen Of Peace Cemetery  
Chapel Building  
Project location: 31 Hitchcock Lane  
Old Westbury, NY, 11568  
**PLAN REVIEW**

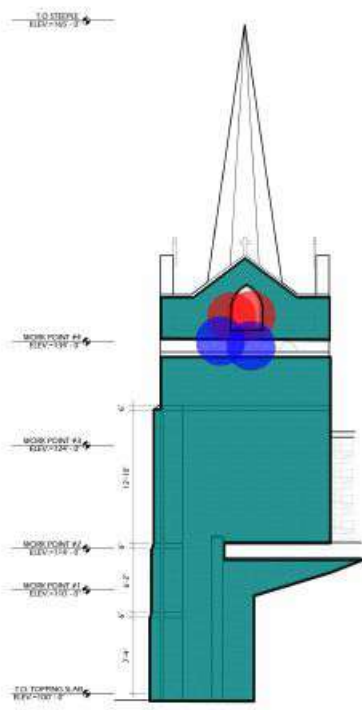
Sheet Title: BUILDING ELEVATIONS

Revisions: \_\_\_\_\_ Date: \_\_\_\_\_

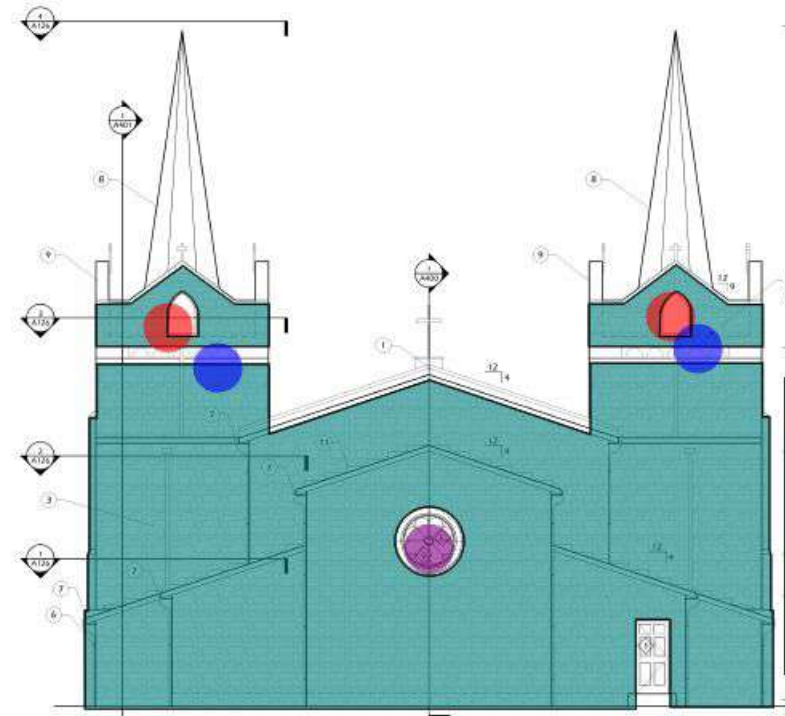
This drawing is design concept and is not for construction. It is the property of Tribute Design Systems, LLC and shall not be reproduced, copied, or modified without written authorization. © 2014  
Scale: AS NOTED

Drawn by: EDS  
Project No.: 18-018  
Date: 3-2-2020  
Sheet No.:

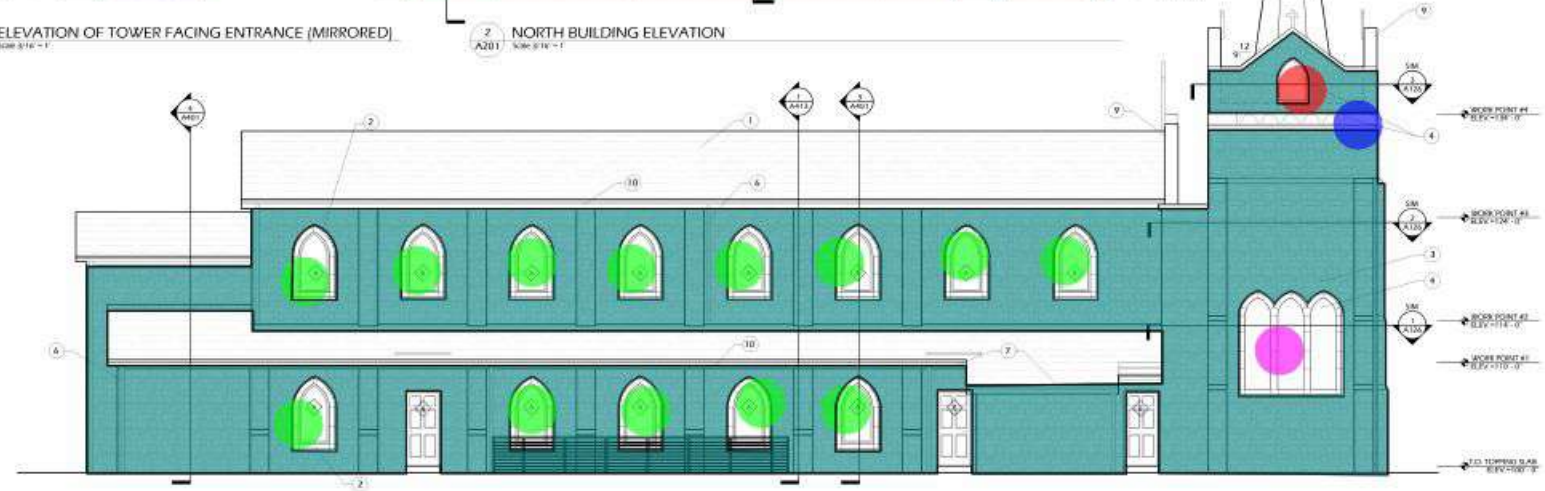
**A200**



3 ELEVATION OF TOWER FACING ENTRANCE (MIRRORED)  
A201 Scale 3/16" = 1'



2 NORTH BUILDING ELEVATION  
A201 Scale 3/16" = 1'



1 WEST BUILDING ELEVATION  
A201 Scale 3/16" = 1'

| KEY NOTES | EXTERIOR MATERIALS SCHEDULE   |
|-----------|---|
| 1         | EMULATED SLATE ROOF SHINGLES  |
| 2         | LIMESTONE VENEER SURROUND, FINISH SMOOTH STAINLESS COLOR RUFF GRAY      |
| 3         | MASONRY VENEER FINISH FACTORY LIMESTONE                                 |
| 4         | LIMESTONE PANELS SEE SCHEDULE 4 FOR FINISH                              |
| 5         | PAINTED FINISHED METAL (SFF) W/ INSET SOLID                             |
| 6         | FINISHED METAL (COPING) TO MATCH GUTTER COLOR TYP BY OWNER              |
| 7         | PRE FINISHED ROUND ALUM. GUTTERS TO MATCH SCSGA                         |
| 8         | PRE-MANUFACTURED METAL STEEPLE W/ FINISHED METAL SUR COLOR TYP BY OWNER |
| 9         | FINISHED METAL COPING   |
| 10        | FINISHED METAL FASCIA COLOR AS SELECTED BY                              |



Tribute Design Systems, LLC  
Architects and Planners  
302 Cedarwood Ave.  
Northbrook, Illinois 60062  
P: 224-242-9999  
F: 224-242-9990  
www.tribute.com

Consultants

|  |                   |               |
|--|-------------------|---------------|
|  | masonry veneer    | 5,617.6 SQ FT |
|  | limestone piece   | 5.0           |
|  | window A surround | 13.0          |
|  | limestone piece   | 5.0           |
|  | Limestone         | 1.0           |
|  | Window F surround | 1.0           |

Project: The Queen Of Peace Cemetery Chapel Building  
Proposed Location: 31 Hitchcock Lane Old Westbury, NY, 11568  
PLAN REVIEW

Sheet Title: BUILDING ELEVATIONS

Revisions: \_\_\_\_\_ Date: \_\_\_\_\_

This drawing is design concept and is subject to the user's property of Tribute Design Systems, LLC, and shall not be reproduced, copied or modified without written authorization. © 2018

Scale: AS NOTED

Drawn by: EDS  
Project No.: 18-010  
Date: 3-2-2020  
Sheet No.:

A201